

# Explore your new Idaho Behavioral Health Plan member portal!

Manage your health journey through Magellan's member portal.

## Use the member portal to:

- Search for providers near you
- Check your behavioral health claims
- View personal care plans
- Review behavioral health assessments
- Find resources for behavioral health
- Access behavioral health articles and videos that matter to you

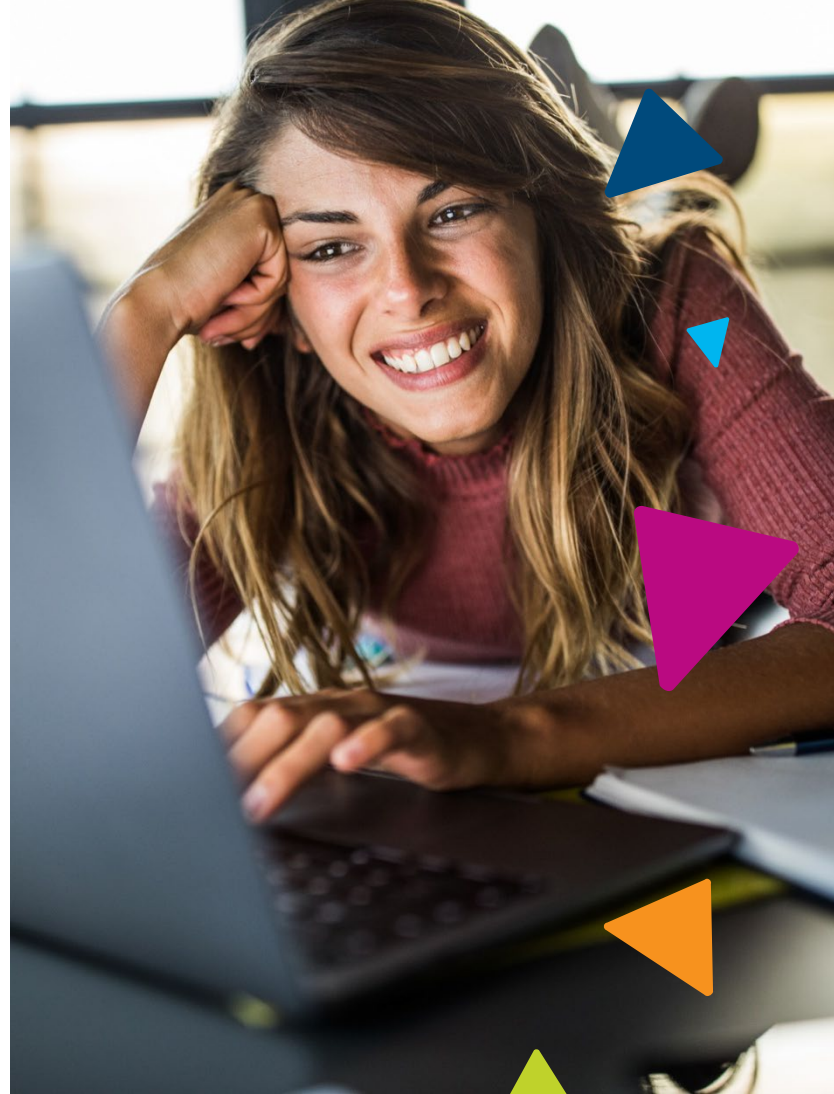
## Getting started is easy!

Visit **Member.MagellanHealthcare.com/Idaho** to setup your account and gain access to your personal information.

**Parents/guardians:** If your youth has Medicaid or other Magellan services but you don't, you won't be able to create a member portal account for them starting April 21. Magellan is working on a fix that will be ready in the next few months. We're sorry for the inconvenience and appreciate your patience.

For all other IBHP information and resources, visit **MagellanofIdaho.com!**

**Magellan**  
HEALTHCARE®



Scan to access the  
Member Portal

